

Go! Go! Go!

staple

staple



There goes a red car...
Go, car, go!



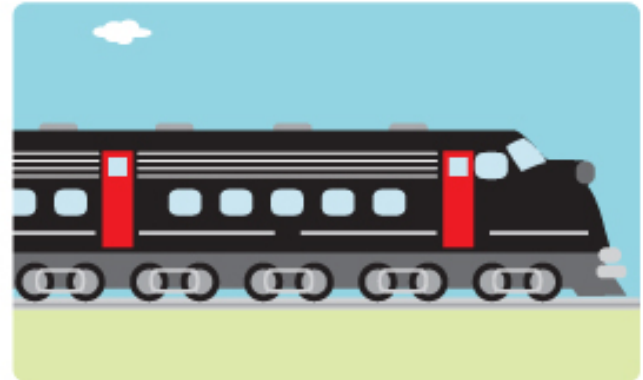
1.

There goes a blue truck...
Go, truck, go!



2.

There goes a black train...
Go, train, go!



3.

**There goes a yellow bus...
Go, bus, go!**



4.

**There goes a white plane...
Go, plane, go!**



5.

**There goes a green bike...
Go, bike, go!**



**So many things can go, go, go!
6.**

Ask your child these questions after sharing the story (if he/she is verbal). These are open-ended questions so in most cases, there is not a "right" or "wrong" answer.

What type of transportation is your favorite? Why do you like that type best?

How do wheels help things move?

If you wanted to go to (place), how would you travel there? Why would you use that type of transportation to get there?